

McLean, Virginia

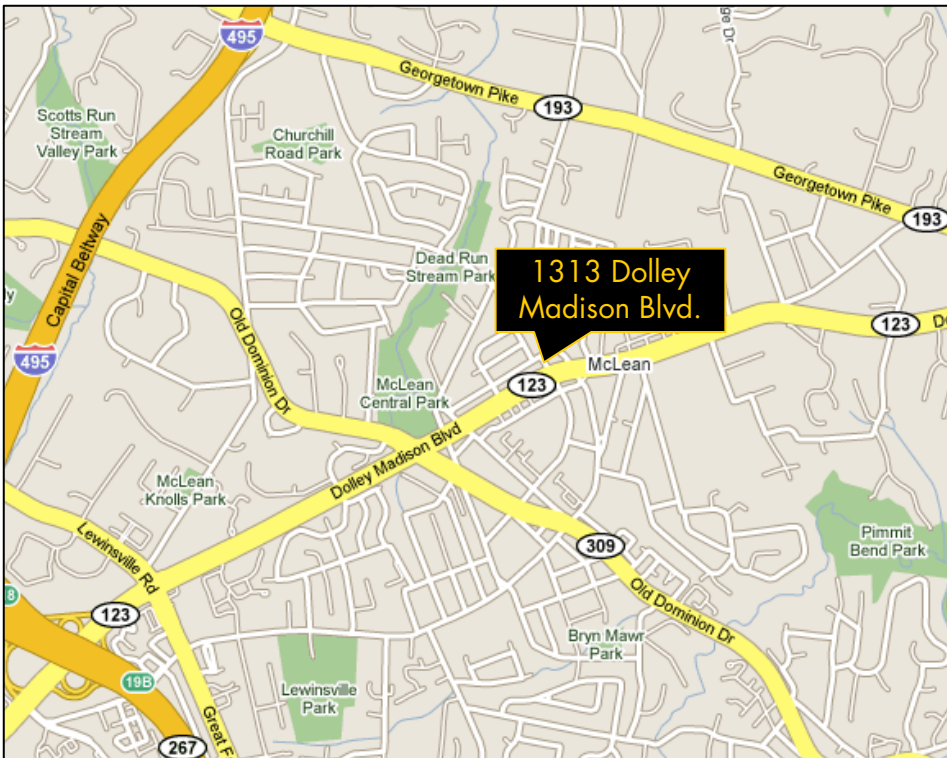
1,959 SF



- Available Immediately
- Term thru June 30, 2011
- Additional Term Available from Landlord
- Rate is negotiable
- 6 windowed offices, 1 conference room and reception area

Amenities

- Located near Tysons Corner, I – 495, I – 66, and Dulles Airport Access Road
- Full service deli open from 7am to 4pm
- Professional tailor and dry cleaners located on ground floor
- Cardinal Bank located on lobby level
- Five minute walk to 10 local restaurants
- On site building engineer



Joshua G. Hartman, LEED AP

202.312.5772

josh.hartman@grubb-ellis.com

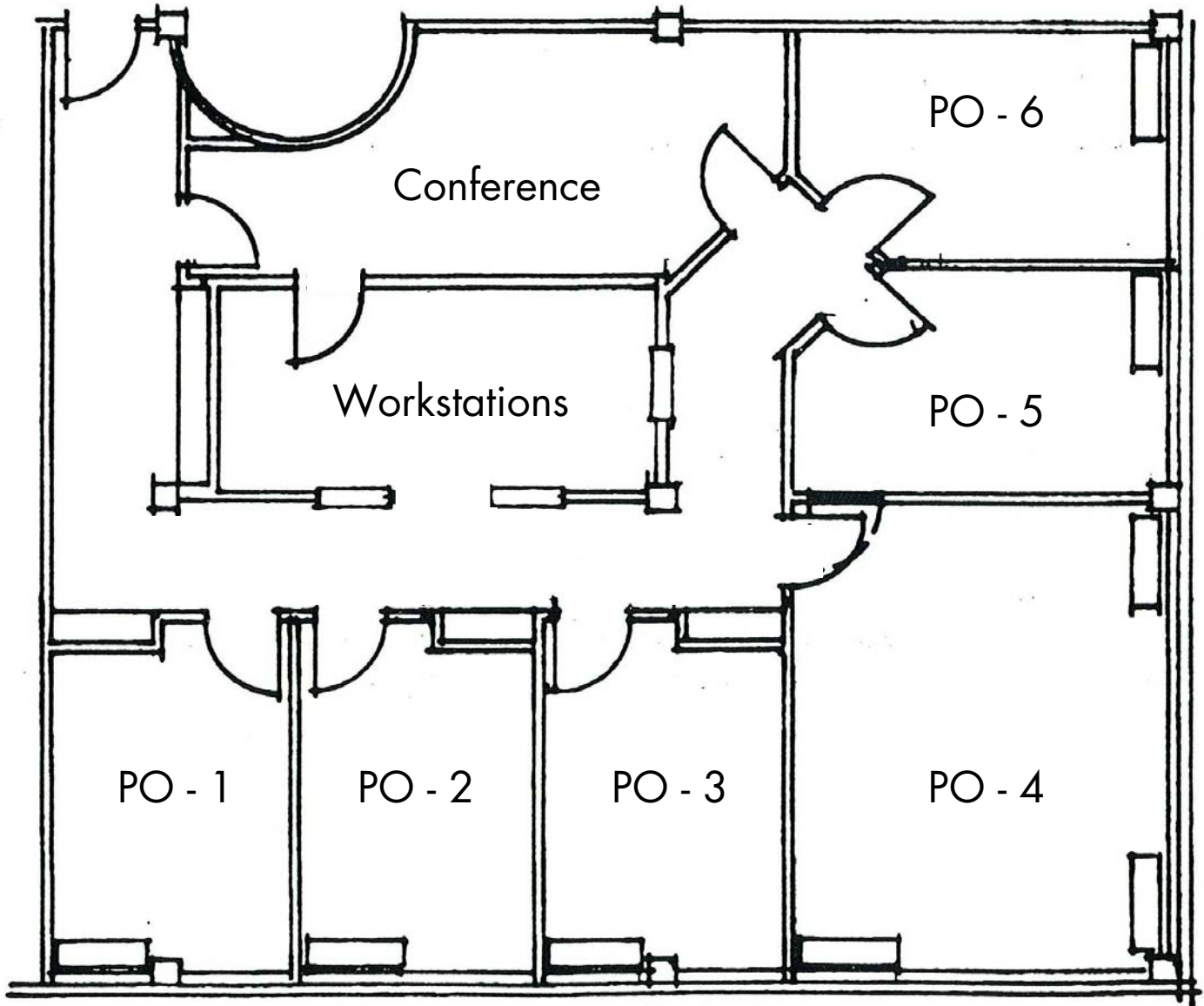
1313 DOLLEY MADISON BLVD.

FOR SUBLEASE

4th Floor

1,959 SF

McLean, Virginia



Joshua G. Hartman, LEED AP

202.312.5772

josh.hartman@grubb-ellis.com

1825 Eye Street NW | Suite 450 | Washington DC 20006 | p 202.312.5400 | f 202.312.5450 | www.grubb-ellis.com